

**Main Floor Features**

614 Sq Ft

9 FT Ceiling

1

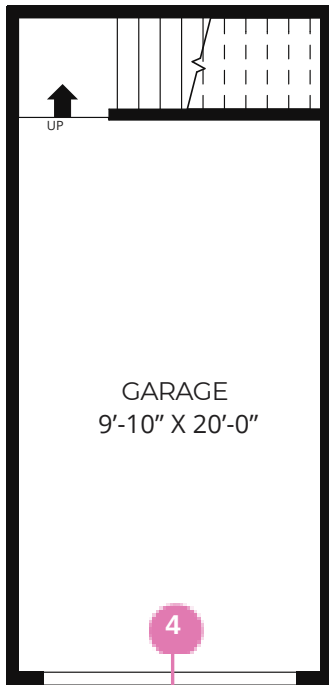


Designed to be the centre-piece of the kitchen, the elongated **kitchen island** lets owners cook, snack and entertain all from the one location.

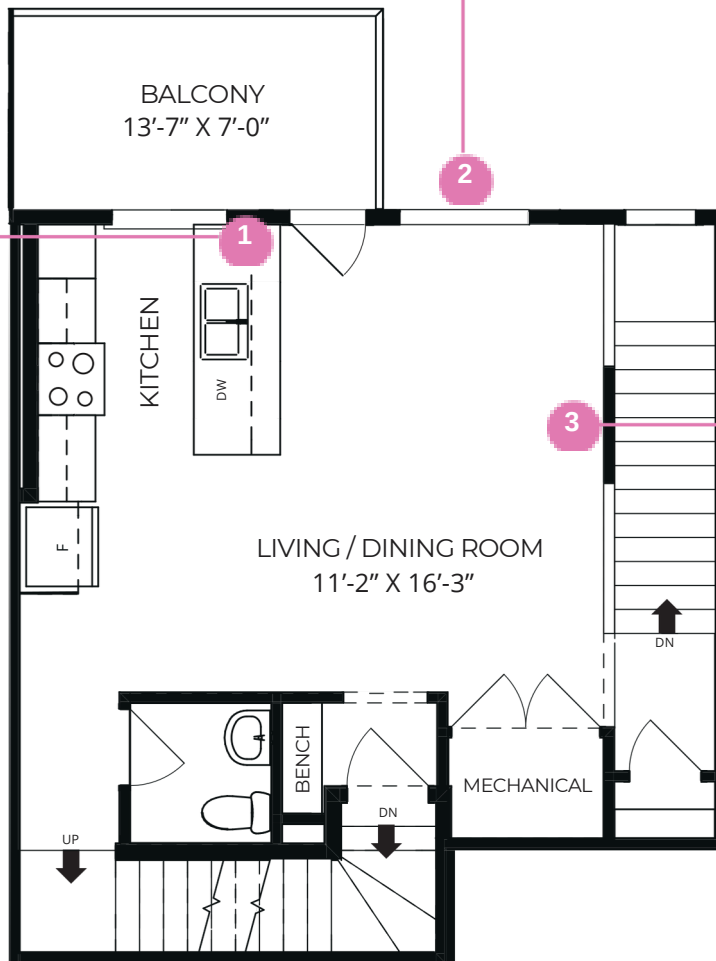
2



To make the Fen feel open and airy, we added large windows in the living room and bedrooms to allow for plenty of **natural light**.



4



2

3



4



Your **attached garage** means no more scraping ice and snow off your car on a cold winter's morning.




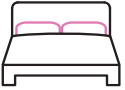
Whether you're entertaining or spending a cozy night in, this **open concept** layout lets you be near it all.

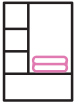


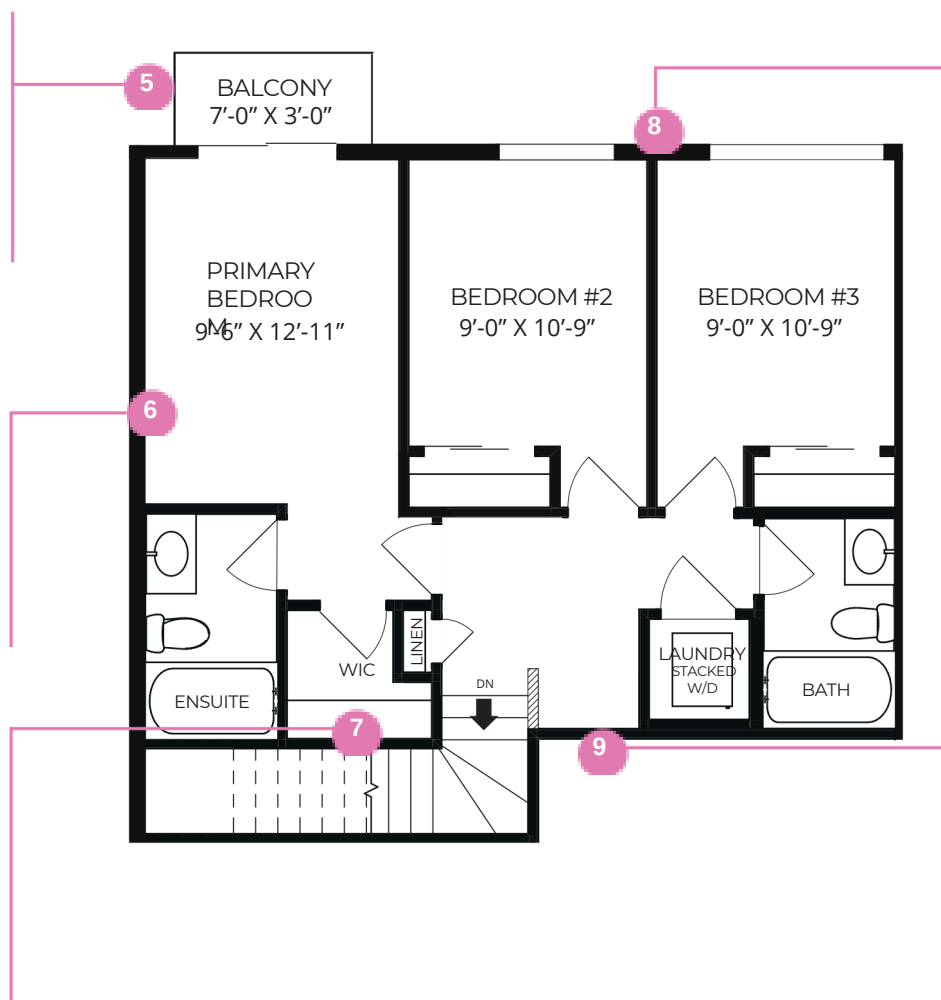
**Upper Floor Features**


**704 SQ FT**


**5**  The Fen comes with an upper floor **private balcony**. Enjoy your morning coffee or relax after a long day with your favourite beverage.

**6**  This **spacious primary bedroom** is designed to fit a queen-size bed and two night stands with room to spare.

**7**  Your desirable **walk-in closet** has plenty of room for all your clothes.



**8**  The large **second and third bedrooms** in the Fen purposefully designed to be the same size as a laned single family home.

**9**  Use this space as a **pocket office** for homework or as a hub for your home IT gear like a wireless printer.

